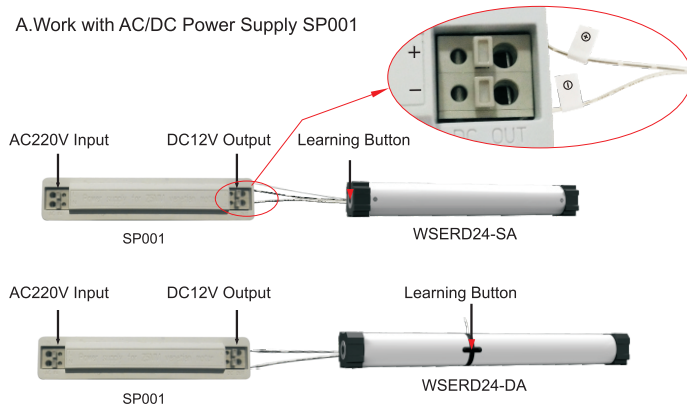
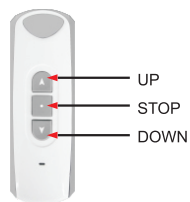


1 Technique specification

- Power supply:DC 12V
- Protecting index:IP20
- Frequency:433.92MHz
- The motor can be compatible with 15 emitters at most
- Codes: Rolling Codes

2 Power Supply

A.Work with AC/DC Power Supply SP001



Technical date:

Input voltage:AC100—240V

Input current:MAX-0.1A

Rated voltage:DC12V(+/-0.5V)

Rated current:1A(MAX1.2A)

Power factor:0.5

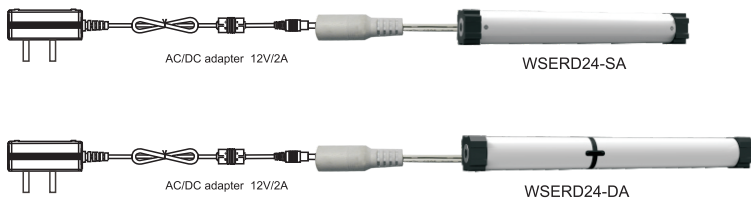
Efficiency:85%

Ripple voltage:<50mv

Work Temp:-20°C ~ 85°C

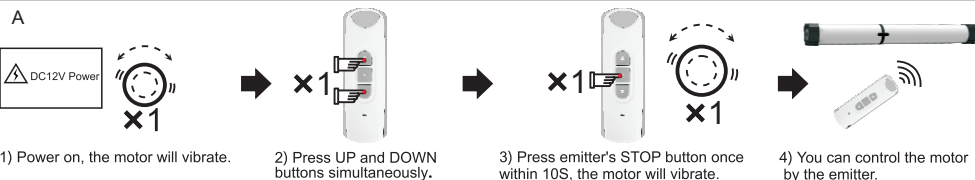
Protection class:IP50

B.Work with AC/DC adapter



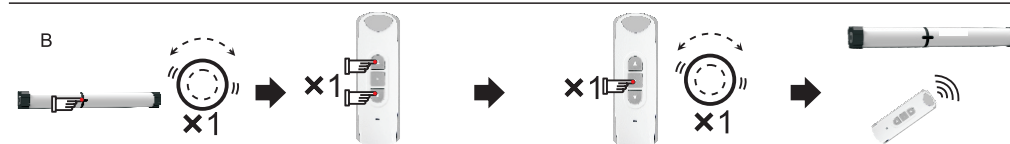
Note: The following instruction is only using WSERD24-DA for example. The WSERD24-SA is the same

3 Code Learning



Note: a) Way A is only for the tubular motor which didn't learn any emitter's code.

b) If the motor has already learned emitter's code, way A is invalid for this motor, but you can cut the electricity and then power on the motor three times continuously, and make sure the motor vibrate each time, then way A is valid for this motor.



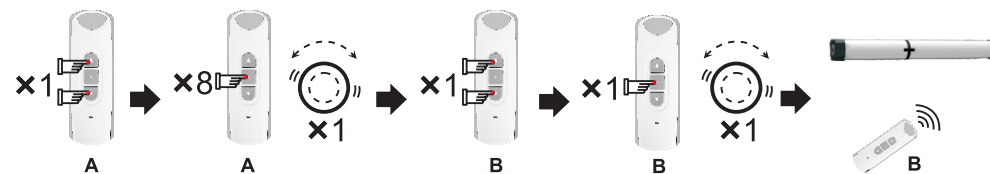
1) Press motor head's button for 1S till the motor vibrates.

2) Press UP and DOWN

3) Press emitter's STOP button once with 10S, the motor will vibrate.

4) You can control the motor by the emitter.

4 Copy



1) Press A emitter's UP and DOWN buttons simultaneously.

2) Press A emitter's STOP button eight times within 10S, the motor will vibrate.

3) Press B emitter's UP and DOWN buttons simultaneously.

4) Press B emitter's STOP button once within 10S, the motor will vibrate.

5) You can control the motor by B emitter.

Note: Emitter B can control the tubular motor after it learns code from emitter A.

5 Code Deleting

A: Delete the emitter you are operating



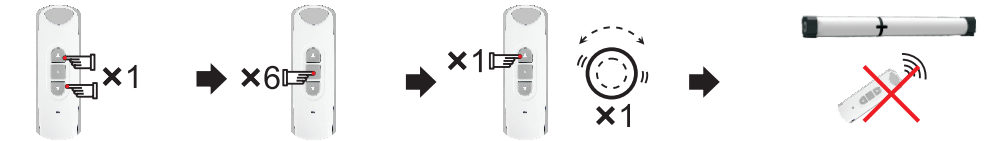
1) Press UP and DOWN buttons simultaneously.

2) Press emitter's STOP button seven times within 10S.

3) Press emitter's UP button once within 10S, the motor will vibrate.

4) This emitter you are operating now won't control the motor again.

B:Delete all emitters



1) Press UP and DOWN buttons simultaneously.

2) Press emitter's STOP button six times within 10S.

3) Press emitter's UP button once within 10S, the motor will vibrate.

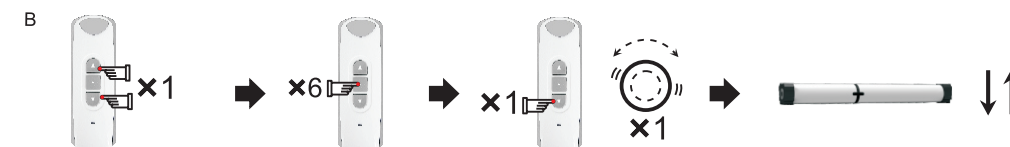
4) All the emitters that have already learned the motor's code won't control the motor any more.

6 Direction Change



1) Press motor head's button for 3S till the motor vibrates.

2) The motor's running direction is changed.



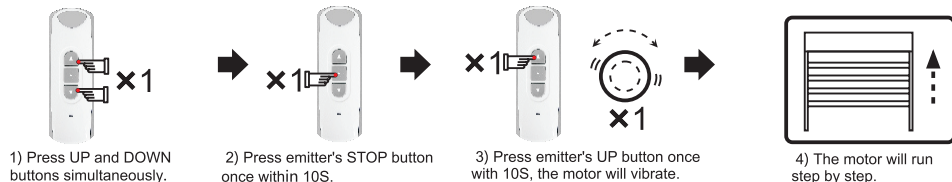
1) Press UP and DOWN buttons simultaneously.

2) Press emitter's STOP button six times within 10S.

3) Press emitter's DOWN button once with 10S, the motor will vibrate.

4) The motor's running direction is changed.

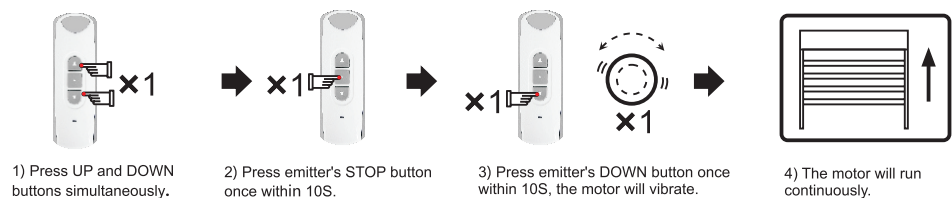
7 Set Step by Step Function



- 1) Press UP and DOWN buttons simultaneously.
- 2) Press emitter's STOP button once within 10S.
- 3) Press emitter's UP button once within 10S, the motor will vibrate.
- 4) The motor will run step by step.

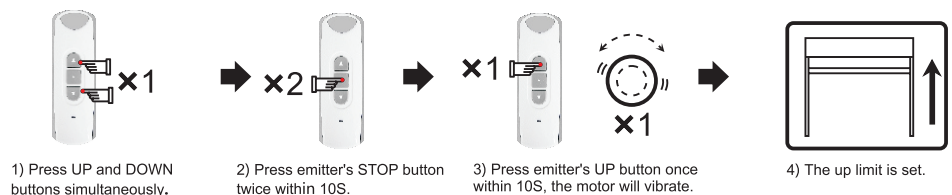
Note: If the motor is in vibration state, press emitter's UP or DOWN button for 3 S, the motor will run continuously.

8 Delete Step by Step Function



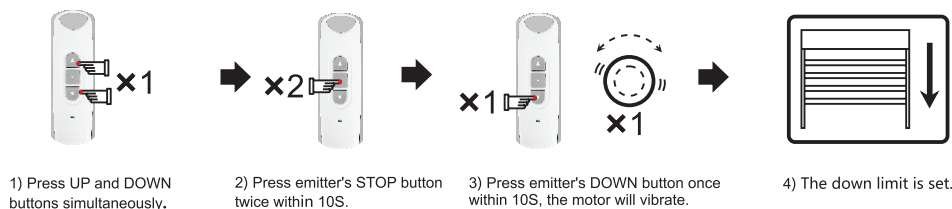
- 1) Press UP and DOWN buttons simultaneously.
- 2) Press emitter's STOP button once within 10S.
- 3) Press emitter's DOWN button once within 10S, the motor will vibrate.
- 4) The motor will run continuously.

9 Up Limit Setting



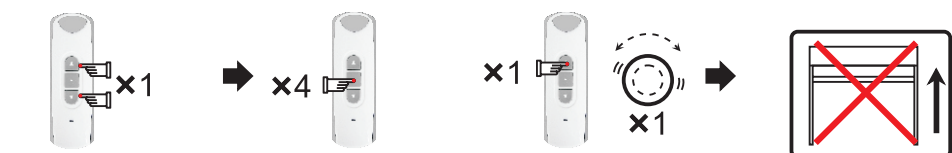
- 1) Press UP and DOWN buttons simultaneously.
- 2) Press emitter's STOP button twice within 10S.
- 3) Press emitter's UP button once within 10S, the motor will vibrate.
- 4) The up limit is set.

10 Down Limit Setting



- 1) Press UP and DOWN buttons simultaneously.
- 2) Press emitter's STOP button twice within 10S.
- 3) Press emitter's DOWN button once within 10S, the motor will vibrate.
- 4) The down limit is set.

11 Up Limit Deleting



- 1) Press UP and DOWN buttons simultaneously.
- 2) Press emitter's STOP button four times within 10S.
- 3) Press emitter's UP button once within 10S, the motor will vibrate.
- 4) The up limit is deleted.

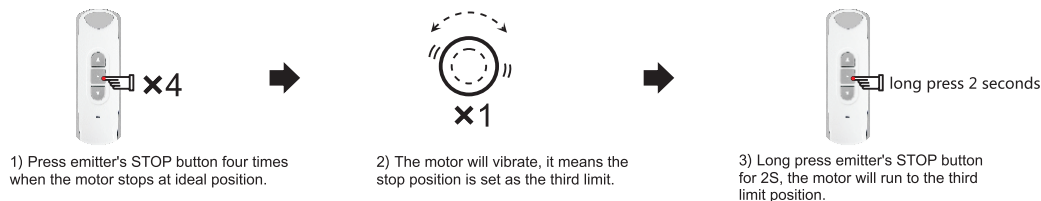
12 Down Limit Deleting



- 1) Press UP and DOWN buttons simultaneously.
- 2) Press emitter's STOP button four times within 10S.
- 3) Press emitter's DOWN button once within 10S, the motor will vibrate.
- 4) The down limit is deleted.

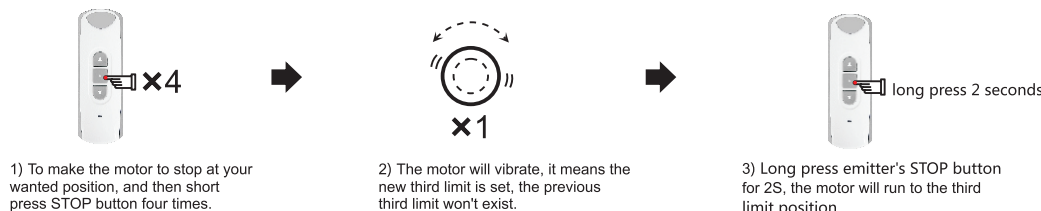
13 The third limit

A Set The Third Limit



- 1) Press emitter's STOP button four times when the motor stops at ideal position.
- 2) The motor will vibrate, it means the stop position is set as the third limit.
- 3) Long press emitter's STOP button for 2S, the motor will run to the third limit position.

B Reset The Third Limit



- 1) To make the motor to stop at your wanted position, and then short press STOP button four times.
- 2) The motor will vibrate, it means the new third limit is set, the previous third limit won't exist.
- 3) Long press emitter's STOP button for 2S, the motor will run to the third limit position.

Note: 1) The third limit is also named as the intermediate limit, it is available at any position between up and down limit.
2) The third limit will be deleted automatically if the up/down limit is deleted.

! Announcement

- Setting may fail due to the interference of signal. If in this case, please reset.
- The emitter RE101 is taken as an example in this instruction. The receiver is compatible with several other rolling code emitters.
- Please do not press buttons for too long in case life span of battery declines. The button press should be about 0.5s with 1S interval. If the battery is in low power, please replace battery.
- The control unit is of high voltage. Please do not place it in humid atmosphere.
- Children should be supervised to ensure that they do not play with the appliance.
- Ambient temperature: -10°C ~ +55°C.
- All products are as per material subjects if there is change in appearance, color, function etc. The information is subject to changes without prior notice.