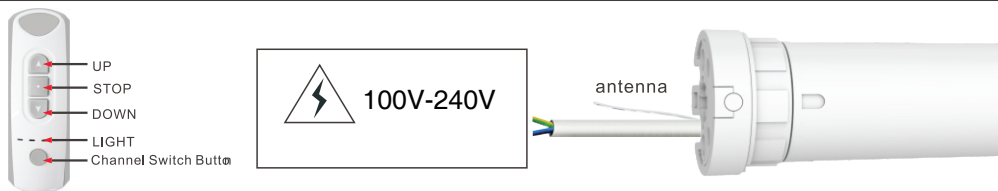


1 Technique Specifications

Motor:

- Power: build-in transformer 220V/50Hz
- Could connect with 15pcs of emitter at most

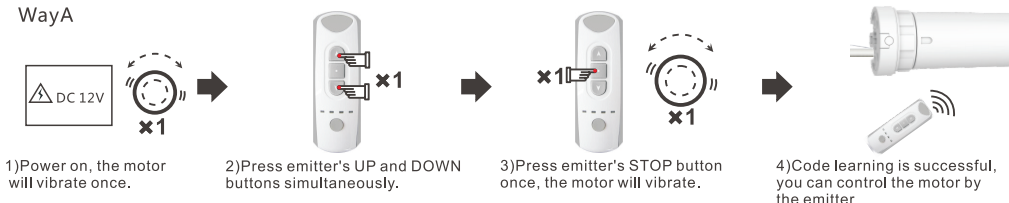
2 Wire Connection



3 Code Learning

Note: Way A is only for the tubular motor which hasn't learned any emitter's code.

Way A

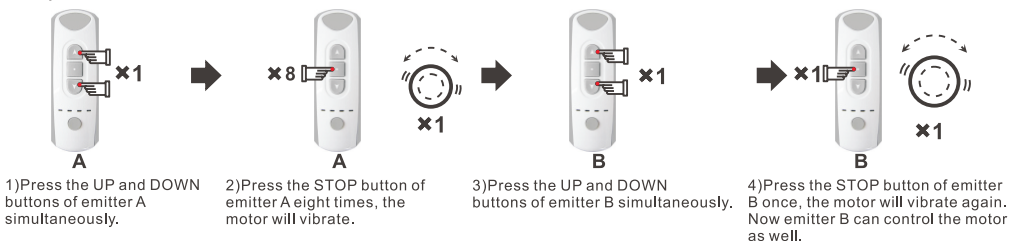


- 1) Power on, the motor will vibrate once.
- 2) Press emitter's UP and DOWN buttons simultaneously.
- 3) Press emitter's STOP button once, the motor will vibrate.
- 4) Code learning is successful, you can control the motor by the emitter.

Note: a) Way A is only for the tubular motor which has not learned any emitter's code.

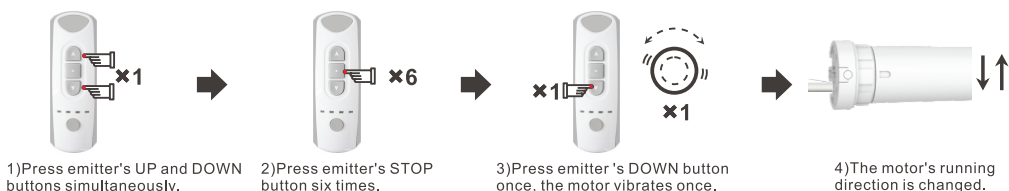
b) If the motor has already learned emitter's code, way A is invalid for this motor, but you can cut the electricity and then power on the motor three times continuously, and make sure the motor vibrate each time, then way A is valid for this motor.

Way B Note: Emitter A has learned motor's code, and emitter B is a new one.



- 1) Press the UP and DOWN buttons of emitter A simultaneously.
- 2) Press the STOP button of emitter A eight times, the motor will vibrate.
- 3) Press the UP and DOWN buttons of emitter B simultaneously.
- 4) Press the STOP button of emitter B once, the motor will vibrate again. Now emitter B can control the motor as well.

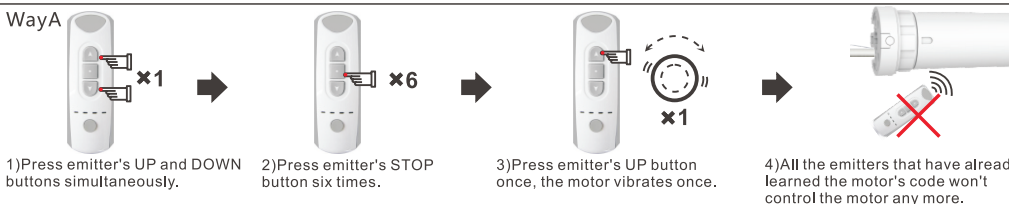
4 Direction Change



- 1) Press emitter's UP and DOWN buttons simultaneously.
- 2) Press emitter's STOP button six times.
- 3) Press emitter's DOWN button once, the motor vibrates once.
- 4) The motor's running direction is changed.

Note: The motor's running direction will not be changed if the two wires are exchanged.

5 Code Deleting

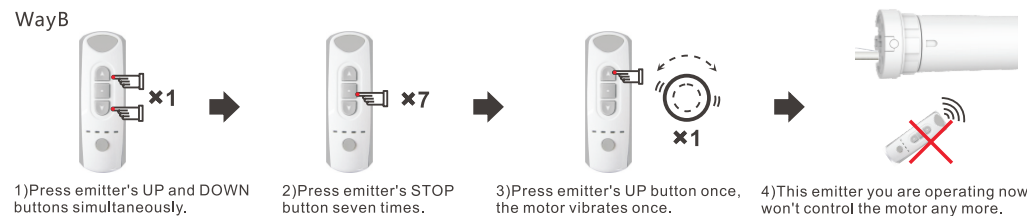


- 1) Press emitter's UP and DOWN buttons simultaneously.
- 2) Press emitter's STOP button six times.
- 3) Press emitter's UP button once, the motor vibrates once.
- 4) All the emitters that have already learned the motor's code won't control the motor anymore.

Note: All the emitter will not control this motor, unless you cut off the power and do code learning again.

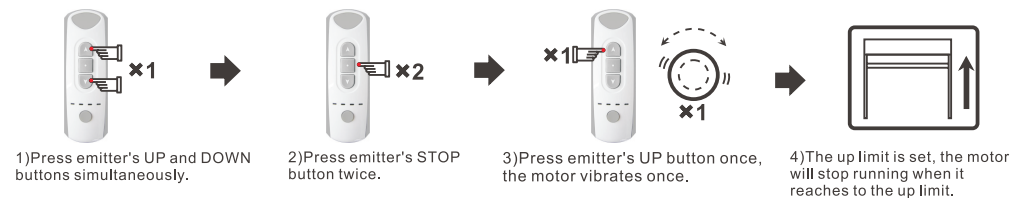
DC Motor Instruction

Way B



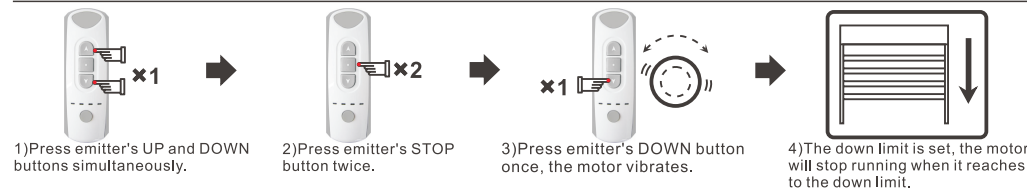
- 1) Press emitter's UP and DOWN buttons simultaneously.
- 2) Press emitter's STOP button seven times.
- 3) Press emitter's UP button once, the motor vibrates once.
- 4) This emitter you are operating now won't control the motor any more.

6 Up Limit Setting



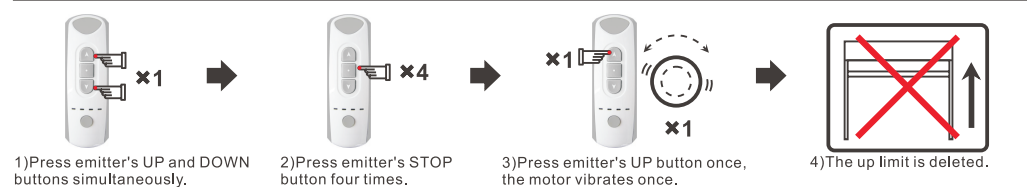
- 1) Press emitter's UP and DOWN buttons simultaneously.
- 2) Press emitter's STOP button twice.
- 3) Press emitter's UP button once, the motor vibrates once.
- 4) The up limit is set, the motor will stop running when it reaches to the up limit.

7 Down Limit Setting



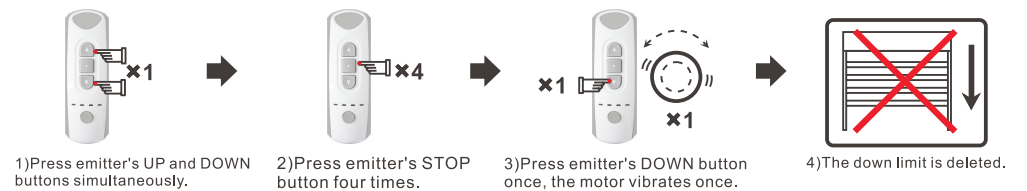
- 1) Press emitter's UP and DOWN buttons simultaneously.
- 2) Press emitter's STOP button twice.
- 3) Press emitter's DOWN button once, the motor vibrates.
- 4) The down limit is set, the motor will stop running when it reaches to the down limit.

8 Up Limit Deleting



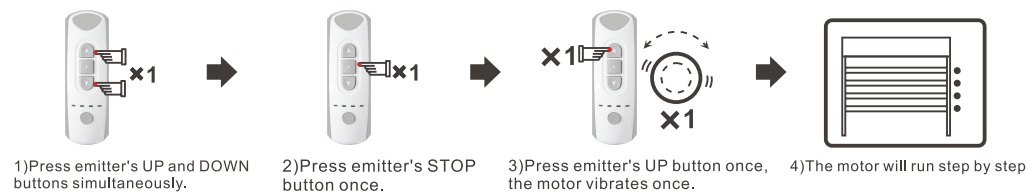
- 1) Press emitter's UP and DOWN buttons simultaneously.
- 2) Press emitter's STOP button four times.
- 3) Press emitter's UP button once, the motor vibrates once.
- 4) The up limit is deleted.

9 Down Limit Deleting



- 1) Press emitter's UP and DOWN buttons simultaneously.
- 2) Press emitter's STOP button four times.
- 3) Press emitter's DOWN button once, the motor vibrates once.
- 4) The down limit is deleted.

10 Set Step by Step Function

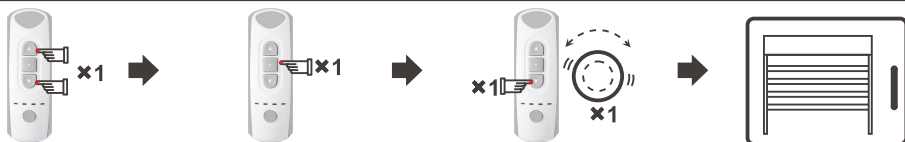


- 1) Press emitter's UP and DOWN buttons simultaneously.
- 2) Press emitter's STOP button once.
- 3) Press emitter's UP button once, the motor vibrates once.
- 4) The motor will run step by step.

Note: If the motor runs step by step, long press emitter's UP or DOWN button, the motor will run continuously.

DC Motor Instruction

11 Delete Step by Step Function



- 1) Press emitter's UP and DOWN buttons simultaneously. 2) Press emitter's STOP button once.
- 3) Press emitter's DOWN button once, the motor vibrates once. 4) The motor will run continuously.

12 The Third Limit

A. The Third Limit Setting



- 1) Press emitter's STOP button four times when the motor stops running.
- 2) The motor will vibrate once, it means this position is set as the third limit.
- 3) Long press emitter's STOP button for 2S, the motor will run to the third limit and stop.

B. The Third Limit Resetting



- 1) Make the motor stop at ideal position, press emitter's STOP button four times.
- 2) The motor will vibrate once, the original third limit will be deleted, and this position is set as new third limit.
- 3) Long press emitter's STOP button, the motor will run to the new third limit and stop.

Note: 1) The third limit is also named as intermediate limit, it can be set at any position between up limit and down limit.
2) If the up limit or down limit is deleted, the third limit will be deleted automatically.

! Announcement

- The setting may fail due to other signal interference. In this case, please reset.
- The emitter RE102 is taken as an example in this instruction. The receiver is compatible with several other rolling code emitters.
- If emitter's battery is in low power, please replace it.
- The receiver is of high voltage, please do not place it in humid atmosphere.
- Children should be supervised to ensure that they do not play with the appliance.
- Working temperature: -10°C ~ +55°C.
- All products are as per real subjects. There will be no prior notification if any change in appearance, color, functions etc.