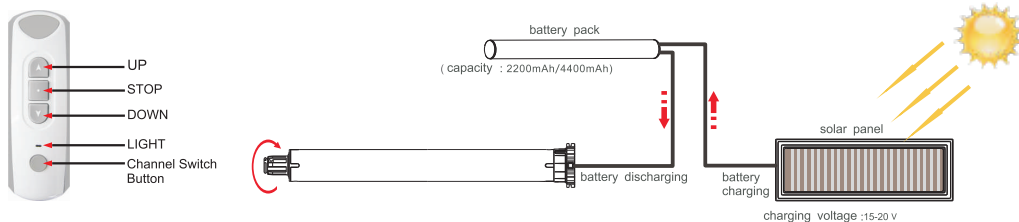


ERD40-L Motor Instruction

1 Technique Specifications

- Protection index: IP 22
- Received frequency: 433.92MHz
- Code: Rolling code
- Power: Lithium battery DC12V
- The motor can be compatible with 15 emitters at most

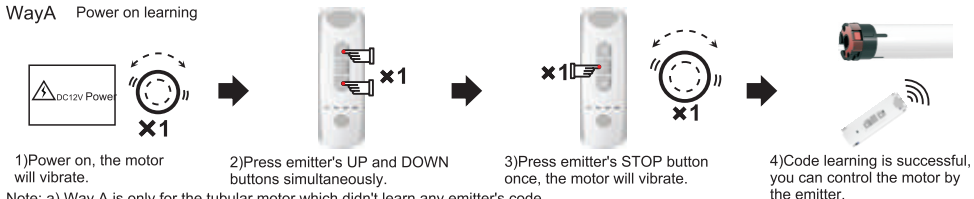
2 Wire Connection



3 Code Learning

Note: After code learning, you can use the emitter to control the motor to run up, down and stop.

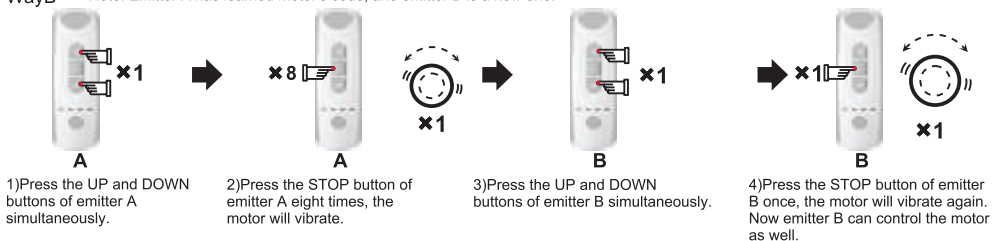
WayA Power on learning



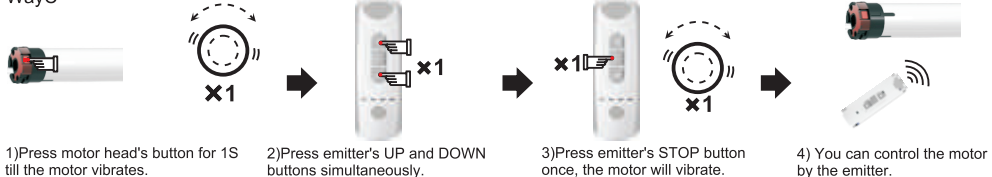
- 1) Power on, the motor will vibrate.
- 2) Press emitter's UP and DOWN buttons simultaneously.
- 3) Press emitter's STOP button once, the motor will vibrate.
- 4) Code learning is successful, you can control the motor by the emitter.
- Note: a) Way A is only for the tubular motor which didn't learn any emitter's code.
b) If the motor has already learned emitter's code, way A is invalid for this motor, but you can cut the electricity and then power on the motor three times continuously, and make sure the motor vibrate each time, then way A is valid for this motor.

WayB

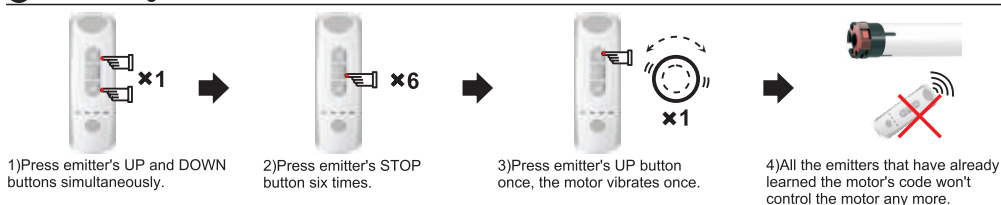
Note: Emitter A has learned motor's code, and emitter B is a new one.



WayC

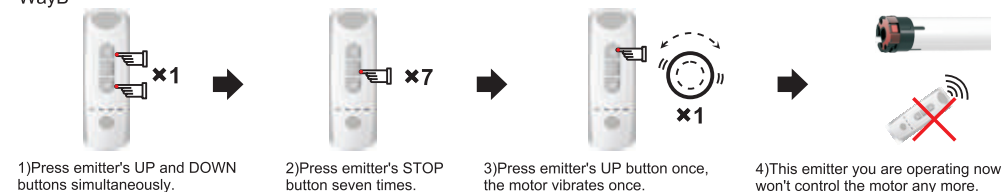


4 Code Deleting



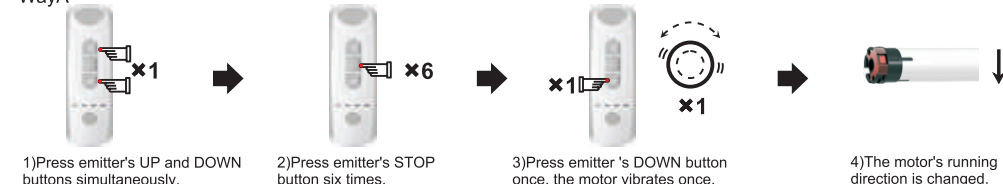
Note: All the emitter will not control this motor, unless you cut off the power and do code learning again.

WayB



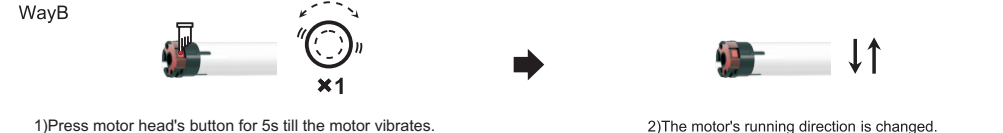
5 Direction Change

WayA

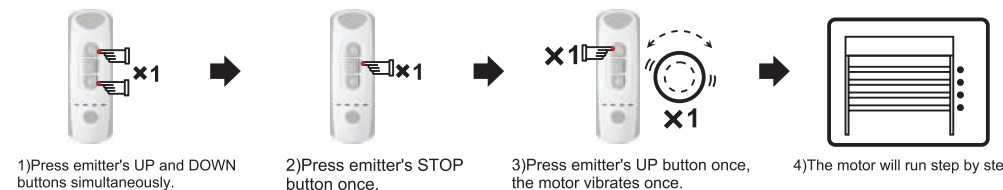


Note: The motor's running direction will not be changed if the two wires are exchanged.

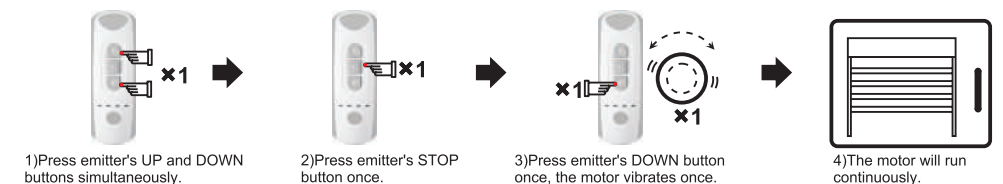
WayB



6 Set Step by Step Function

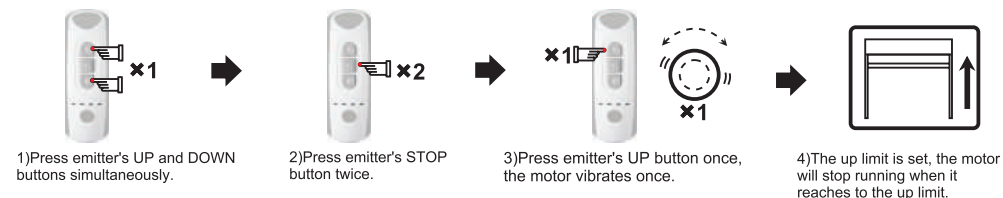


7 Delete Step by Step Function



Note: If the motor runs step by step, long press emitter's UP or DOWN button, the motor will run continuously.

8 Up Limit Setting



9 Down Limit Setting

- 1) Press emitter's UP and DOWN buttons simultaneously.
- 2) Press emitter's STOP button twice.
- 3) Press emitter's DOWN button once, the motor vibrates.
- 4) The down limit is set, the motor will stop running when it reaches to the down limit.

10 Up Limit Deleting

- 1) Press emitter's UP and DOWN buttons simultaneously.
- 2) Press emitter's STOP button four times.
- 3) Press emitter's UP button once, the motor vibrates once.
- 4) The up limit is deleted.

11 Down Limit Deleting

- 1) Press emitter's UP and DOWN buttons simultaneously.
- 2) Press emitter's STOP button four times.
- 3) Press emitter's DOWN button once, the motor vibrates once.
- 4) The down limit is deleted.

12 The third limit

A. The Third Limit Setting

- 1) Press emitter's STOP button four times when the motor stops running.
- 2) The motor will vibrate once, it means this position is set as the third limit.
- 3) Long press emitter's STOP button for 2s, the motor will run to the third limit position.

B. The Third Limit Resetting

- 1) Make the motor stop at ideal position, press emitter's STOP button four times.
- 2) The motor will vibrate once, the original third limit will be deleted, and this position is set as new third limit.
- 3) Long press emitter's STOP button for 2s, the motor will run to the new third limit position.

Note: 1) The third limit is also named as intermediate limit, it can be set at any position between up limit and down limit.

2) If the up limit or down limit is deleted, the third limit will be deleted automatically.

ATTENTIONS

- Prohibit the product into a fire, in case of fire, explode and environment pollution.
- Setting may fail due to the interference of signal. If in this case, please reset.
- The emitter RE102 is taken as an example in this instruction. The receiver is compatible with several other rolling code emitters.
- Children should be supervised to ensure that they do not play with the appliance.
- Children should be supervised to ensure that they do not play with the appliance
- Working temperature: -15°C~ +65°C.
- All products are as per material subjects if there is change in appearance, color, function etc. The information is subject to changes without prior notice.