

ME Motor Instruction

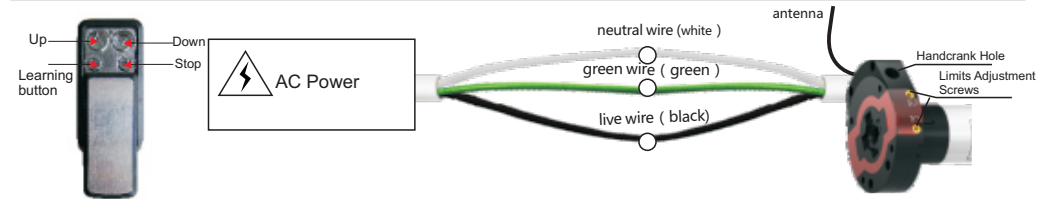
Installation Instructions

- 1.The tubular motor is running continuously in factory mode. It can be changed to run step by step if needed.
- 2.The tubular motor is with downwards obstacle detection in factory mode.
- 3.Before set the down limit position, the downwards obstacle detection should be turned off firstly, so as to make sure the roller shutter or rolling door can be fully closed.
- 4.In the following steps, Step 3-6 should be strictly followed in designed order.

1 Technique Specifications

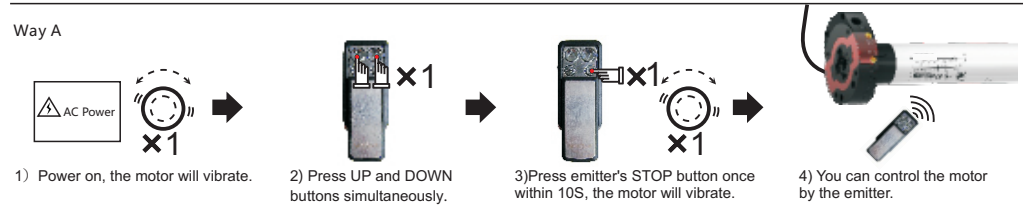
- Power: AC 220V/50Hz
- Protection Index: Ip44
- The motor can be compatible with 15 emitters at most

2 Wire Connection

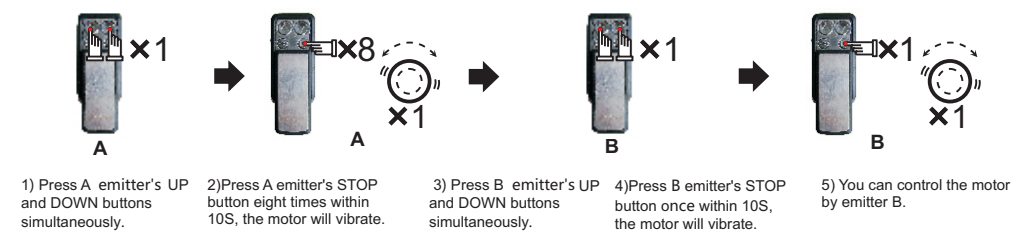


3 Code Learning

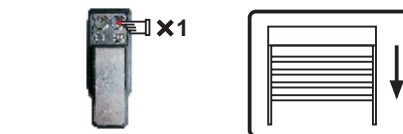
Way A



Way B



4 Direction confirming



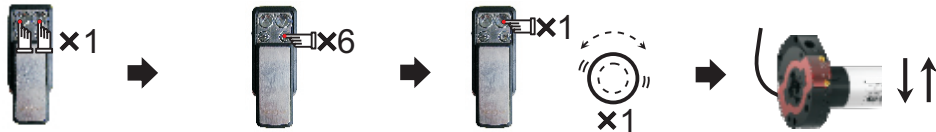
- 1) Long press DOWN button.
- 2) Confirm the roller blind run downwards, otherwise change the direction.

Note: If the running direction of the roller blind is as illustrated in figure, please directly go to Step 6. If not, please change the direction according to Step 5 and then go to Step 6.

ME Motor Instruction

5 Direction Change

Note: This function aims to see if the roller shutter movement directions are the same as the emitter indicates, otherwise, you need to do the direction change.



- 1) Press UP and DOWN buttons simultaneously.
- 2) Press emitter's STOP button six times within 10S.
- 3) Press emitter's DOWN button once within 10S, the motor will vibrate.
- 4) The motor's running direction is changed.

6 Limits Setup (Notes: Before set up, the downwards obstacle detection should be turned off firstly. Or the roller shutter or rolling door might not be fully closed).

A. Turn off downwards obstacle detection function

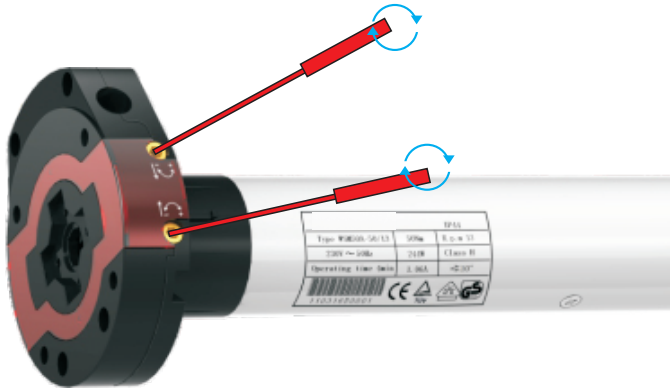


- 1) Press UP and DOWN buttons simultaneously.
- 2) Press emitter's STOP button three times within 10S.
- 3) Press emitter's DOWN button once within 10S, the motor will vibrate.
- 4) Downwards obstacle detection is off.

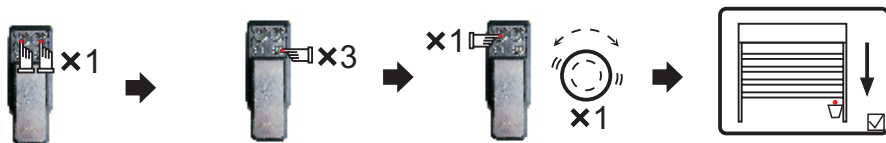
B. When doors and curtains are under closing circumstance and motor's power is on, press UP button on the emitter to make door or curtain run upwards. Adjusting limit label means the clockwise and counterclockwise turning of the motor. At present, turning direction (direction of the arrow) is the up-limit control switch, if you want to increase the up-limit point, you can turn adjusting lever to "+" direction; On the contrary, turning the lever to "-" direction, the up-limit point is reduced. The method is the same with down-limit point adjusting, it can turn to your perfect position, too.

C. If the power is off, you can open or close the door and window with hand crank.

Attention: The limit position has been changed now and you can reset it by following step A.



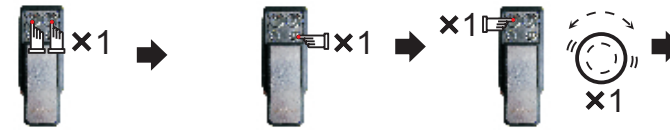
D. Turn on downwards obstacle detection function



- 1) Press UP and DOWN buttons simultaneously.
- 2) Press emitter's STOP button three times within 10S.
- 3) Press emitter's UP button once within 10S, the motor will vibrate.
- 4) Downwards obstacle detection is on.

ME Motor Instruction

7 Set Step by Step Function



- 1) Press UP and DOWN buttons simultaneously.
- 2) Press emitter's STOP button once within 10S.
- 3) Press emitter's UP button once within 10S, the motor will vibrate.
- 4) The motor will run step by step.

Note: If the motor runs step by step, press emitter's UP or DOWN button for 3 S, the motor will run continuously.

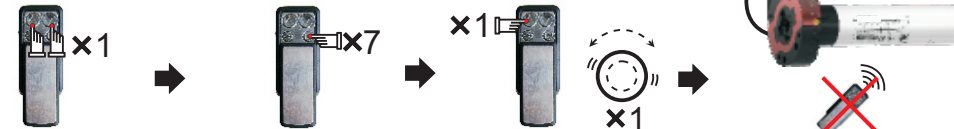
8 Delete Step by Step Function



- 1) Press UP and DOWN buttons simultaneously.
- 2) Press emitter's STOP button once within 10S.
- 3) Press emitter's DOWN button once within 10S, the motor will vibrate.
- 4) The motor will run continuously.

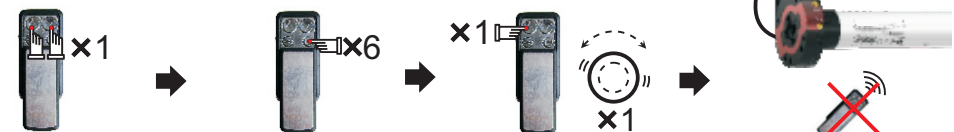
9 Code Deleting

A: Delete the emitter you are operating



- 1) Press UP and DOWN buttons simultaneously.
- 2) Press emitter's STOP button seven times within 10S.
- 3) Press emitter's UP button once within 10S, the motor will vibrate.
- 4) This emitter you are operating now won't control the motor any more.

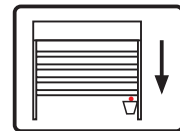
B: Delete all emitters



- 1) Press UP and DOWN buttons simultaneously.
- 2) Press emitter's STOP button six times within 10S.
- 3) Press emitter's UP button once within 10S, the motor will vibrate.
- 4) All the emitters that have already learned the motor's code won't control the motor any more.

10 Obstacle -stop with emitter locked

Note: when the roller shutter meets obstacles in downward movement, the motor would stop running automatically, in the mean time, the emitter button DOWN would be locked. (If you would like the motor go on running downwards, just press button UP to release locking)



! Announcement

- Setting may fail due to the interference of signal. If in this case, please reset.
- The emitter RE101 is taken as an example in this instruction. The receiver is compatible with several other rolling code emitters.
- Please do not press buttons for too long in case life span of battery declines. The button press should be about 0.5s with 1S interval. If the battery is in low power, please replace battery.
- The control unit is of high voltage. Please do not place it in humid atmosphere.
- Children should be supervised to ensure that they do not play with the appliance.
- Ambient temperature: -10°C ~ +55°C.
- All products are as per material subjects if there is change in appearance, color, function etc. The information is subject to changes without prior notice.