

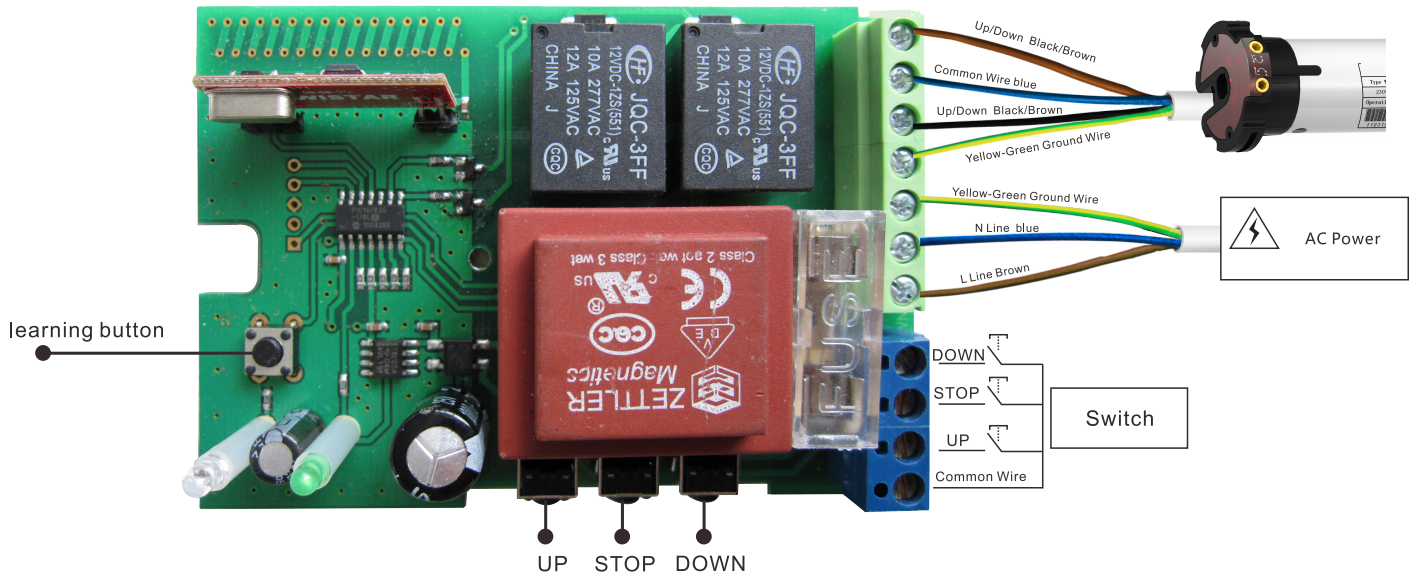
# RC 001 Instruction

## ① Technique Specifications

Receiver:

- Power: AC 220V/50Hz(110V/60Hz)
- Rated Load: ≤ 800W
- The motor will cut off the power after working for 4 mins continuously
- The receiver can be controlled by 15 emitters at most
- The tubular motor can be controlled by pressing receiver's UP,STOP,DOWN button, and also an external switch.

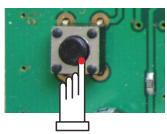
## ② RC 001 Wire Connection



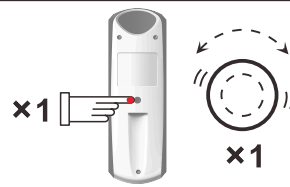
## ③ Code Learning

Note: After code learning, you can use emitter to control the tubular motor up, stop and down.

### WayA



1) Power on, the motor will vibrate.

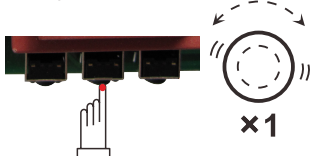


2) Press the learning button of emitter within 10 seconds and the motor will vibrate once.

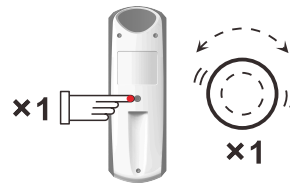


3) You can control the motor by the emitter.

### WayB



1) Long press receiver's STOP button till the motor vibrates.

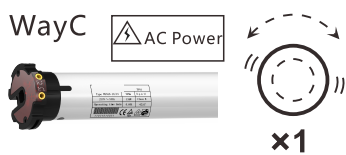


2) Short press the learning button on the emitter within 10s and the motor will vibrate once.

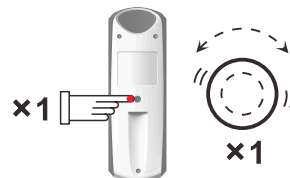


3) You can control the motor now.

### WayC



1) Power on, the motor will vibrate.



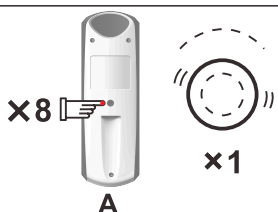
2) Press the learning button of emitter within 10 seconds and the motor will vibrate once.



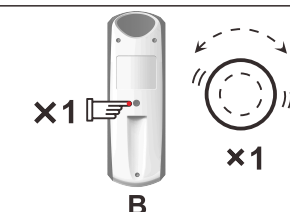
3) You can control the motor by the emitter.

## ④ Copy

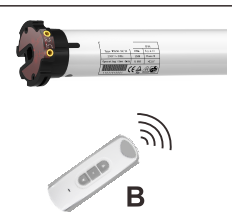
Note: After copy, the new emitter can control the motor as well.



1) Emitter A has learned the code. Short press the learning button on emitter A eight times, the motor will vibrate once.



2) Short press the learning button of the new emitter B once within 10s, and the motor will vibrate once.

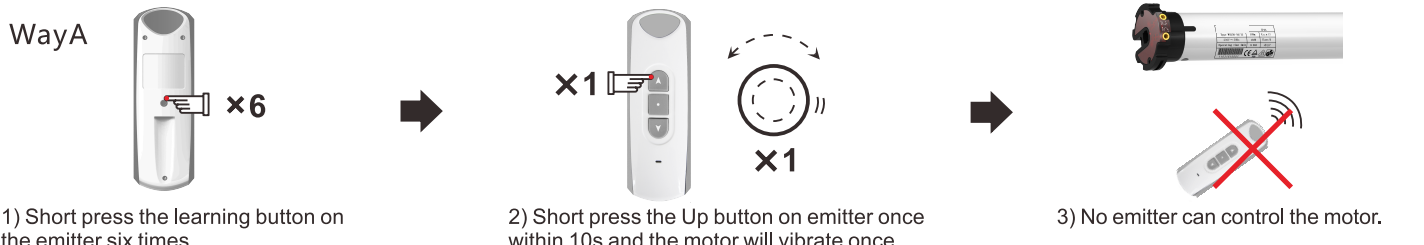


3) Now you can use emitter B to control the motor.

# RC 001 Instruction

## 5 Code Deleting

**WayA**



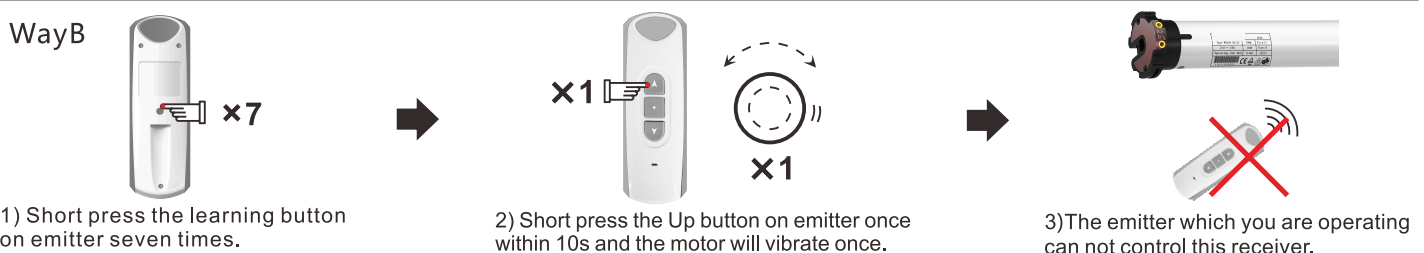
1) Short press the learning button on the emitter six times.

2) Short press the Up button on emitter once within 10s and the motor will vibrate once.

3) No emitter can control the motor.

---

**WayB**



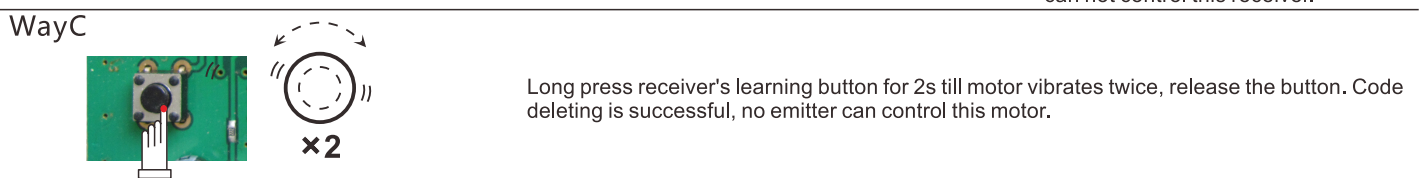
1) Short press the learning button on emitter seven times.

2) Short press the Up button on emitter once within 10s and the motor will vibrate once.

3) The emitter which you are operating can not control this receiver.

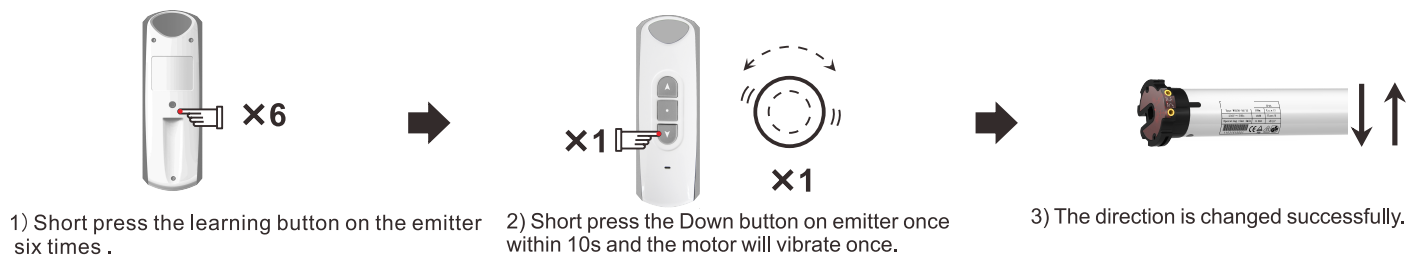
---

**WayC**



Long press receiver's learning button for 2s till motor vibrates twice, release the button. Code deleting is successful, no emitter can control this motor.

## 6 Direction Change

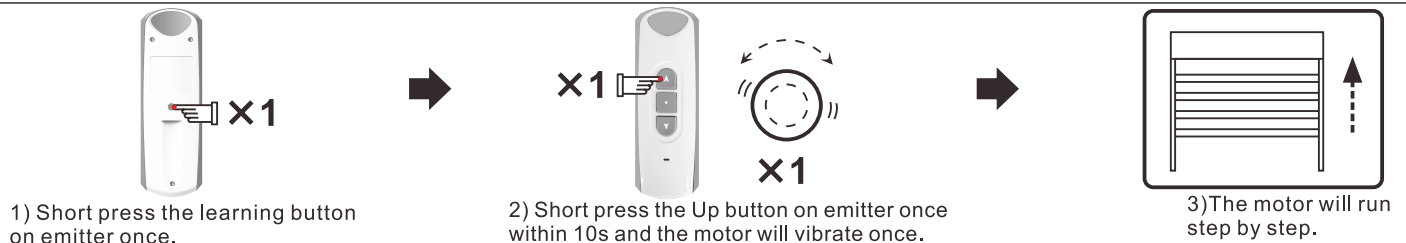


1) Short press the learning button on the emitter six times.

2) Short press the Down button on emitter once within 10s and the motor will vibrate once.

3) The direction is changed successfully.

## 7 Set Step by Step Function

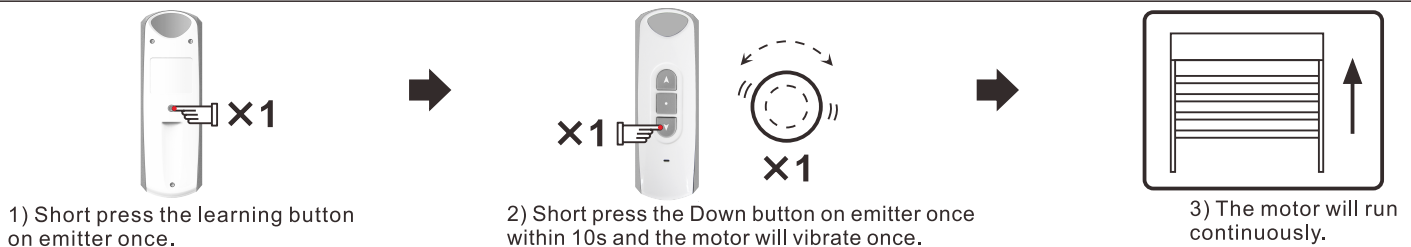


1) Short press the learning button on emitter once.

2) Short press the Up button on emitter once within 10s and the motor will vibrate once.

3) The motor will run step by step.

## 8 Delete Step by Step Function



1) Short press the learning button on emitter once.

2) Short press the Down button on emitter once within 10s and the motor will vibrate once.

3) The motor will run continuously.

## ! Announcement

- The setting may fail due to other signal interference. In this case, please reset.
- The emitter RE101 is taken as an example in this instruction. The receiver is compatible with several other rolling code emitters.
- If emitter's battery is in low power, please replace it.
- The receiver is of high voltage, please do not place it in humid atmosphere.
- Children should be supervised to ensure that they do not play with the appliance.
- Working temperature: -10°C ~ +55 °C.
- All products are as per real subjects. There will be no prior notification if any change in appearance, color, functions etc.