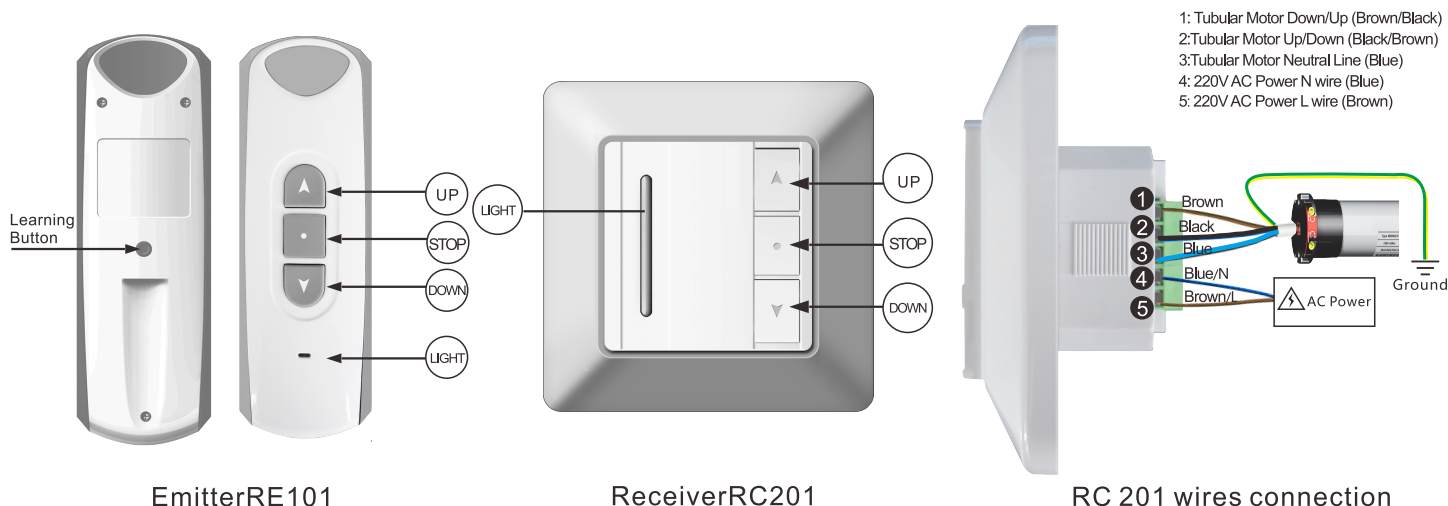


# RC 201 Instruction

## 1 Technique Specifications

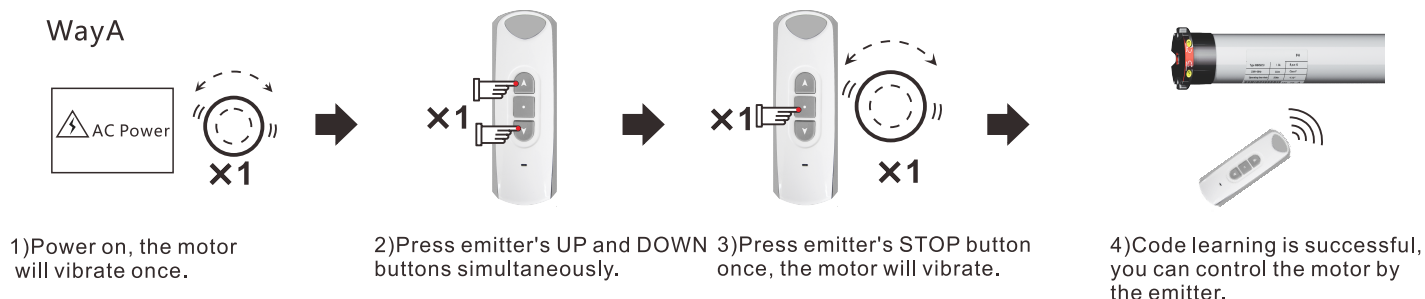
- Power : AC220V(110V)/50Hz(60Hz) ➤ Rated : ≤400W
- The receiver will cut the power after working for 4mins continuously
- The receiver can be controlled by 15 emitters at most
- The receiver 's UP、STOP、DOWN buttons can also control the motor

## 2 Product Appearance

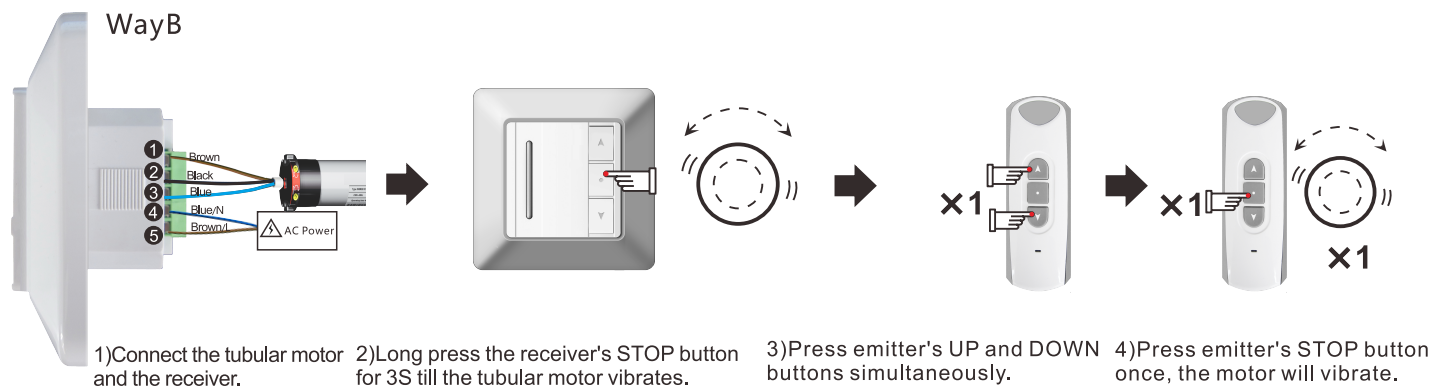


## 3 Code Learning

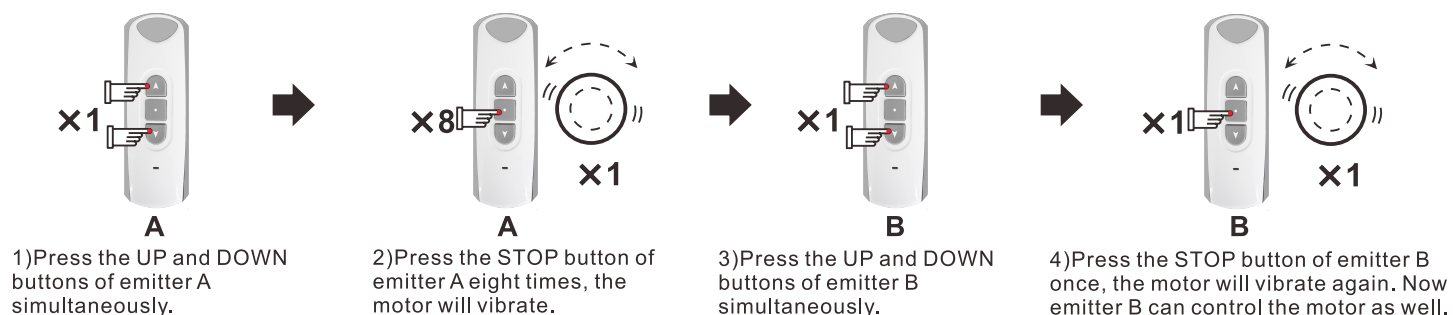
### Way A



### Way B



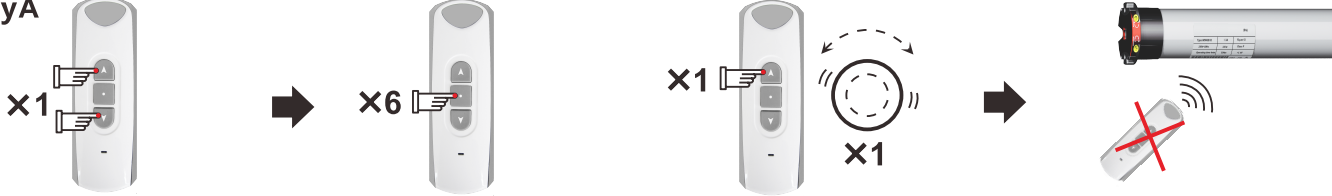
## 4 Copy Note: Emitter B can control the tubular motor after it learns code from emitter A.



# RC 201 Instruction

## 5 Code Deleting

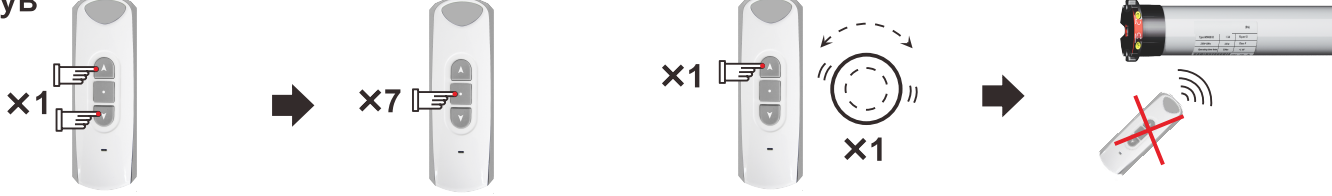
### WayA



- 1) Press emitter's UP and DOWN buttons simultaneously.
- 2) Press emitter's STOP button six times.
- 3) Press emitter's UP button once, the motor vibrates once.
- 4) All the emitters that have already learned the motor's code won't control the motor any more.

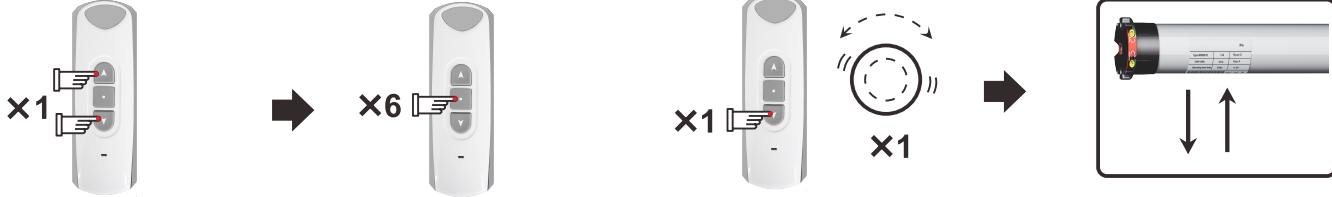
Note: All the emitter will not control this motor, unless you cut off the power and do code learning again.

### WayB



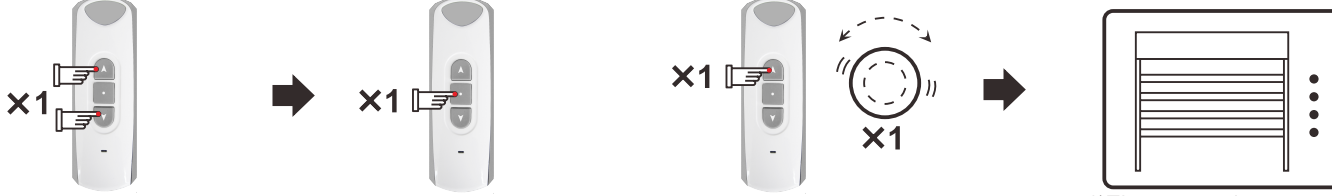
- 1) Press emitter's UP and DOWN buttons simultaneously.
- 2) Press emitter's STOP button seven times.
- 3) Press emitter's UP button once, the motor vibrates once.
- 4) This emitter you are operating now won't control the motor any more.

## 6 Direction Change



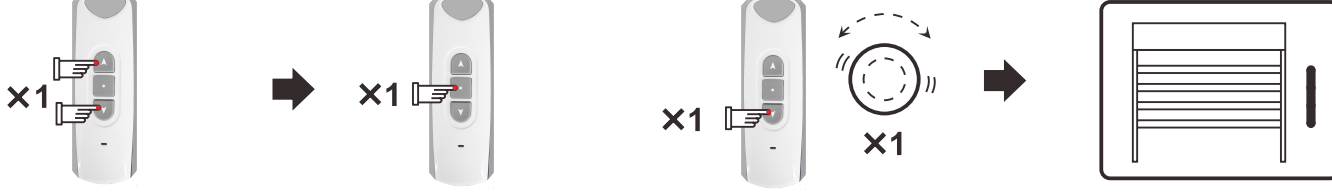
- 1) Press emitter's UP and DOWN buttons simultaneously.
- 2) Press emitter's STOP button six times.
- 3) Press emitter's DOWN button once, the motor vibrates once.
- 4) The motor's running direction is changed.

## 7 Set Step by Step Function



- 1) Press emitter's UP and DOWN buttons simultaneously.
- 2) Press emitter's STOP button once.
- 3) Press emitter's UP button once, the motor vibrates once.
- 4) The motor will run step by step.

## 8 Delete Step by Step Function



- 1) Press emitter's UP and DOWN buttons simultaneously.
- 2) Press emitter's STOP button once.
- 3) Press emitter's DOWN button once, the motor vibrates once.
- 4) The motor will run continuously.

## ! Announcement

- Setting may fail due to the interference of signal. If in this case, please reset.
- The emitter RE101 is taken as an example in this instruction. The receiver is compatible with several other rolling code emitters.
- Please do not press buttons for too long in case life span of battery declines. Pressing time should be at 0.5S, interval time should be 1 second. If the battery is in low power, please replace battery.
- The control unit is of high voltage. Please do not place it in humid atmosphere.
- Children should be supervised to ensure that they do not play with the appliance.
- Ambient temperature: -10°C ~ +55°C.
- All products are as per material subjects if there is change in appearance, color, function etc. The information is subject to changes without prior notice.